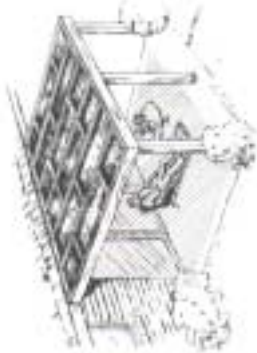
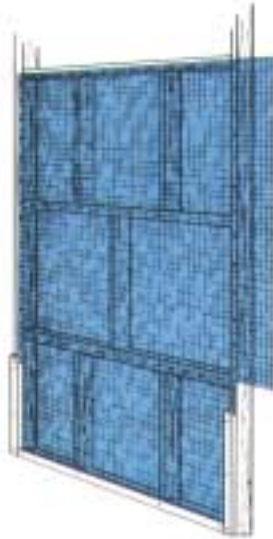


Do it Yourself

10' x 12' Patio Cover



Enduro Shade aids air conditioning by keeping your patio cooler.



Enduro® Shade Cloth comes in 6' widths. 6' width will cover 3-24" bays.

Patio Cover Plans are available at the service desk.

Other Products Available



- Ground Cover (Fabric description on back.)
- Shade Cloth (Fabric description on back.)
- Custom Shade Panels
- Grommet Kits
- Grommet Refills
- Lacing Cord

Custom Fabrication Available
(Additional information available at service desk.)

Fabric Description

Enduro® Shade

The ultimate high quality shade fabric for residential and commercial shading projects. Vinyl impregnated polyester yarn, woven and heat set for stability. Fire retardant. Has longest life of any shading product on the market. Colors available from stock in 90% shade factor are green, brown, black, silver, spruce green, blue, deep sea blue, spiced sand, and white. Colors available from stock in 65% shade factor are green, brown, black, silver, spiced sand, and deep sea blue. Other colors special order (minimum order required). Ten year plus, life.

Dura-Knit™ Shade

High-density knitted monofilament shade. Will not travel when cut. Color green. Shade factor 60% from stock. Other shade factors and other colors available upon request (minimum order required). Three year plus, life.

Dura-Lene™ Shade

Woven monofilament polypropylene yarn shade cloth. Standard product used by growers. Not as stable as knitted shade cloth. Some raveling when cut. Color black. Shade factor 65%. Other factors available upon request (minimum order required).

Dura-Lene™ Landscape Fabric

"Groundcover" for weed control and soil separation. Allows rain and chemicals to seep through. Tightly woven monofilament flat yarn. Color black.



90%



65%



Enduro® Shade



WE MAKE THE DIFFERENCE

in

DEGREES



Hendee Enterprises, Inc.

Houston, Texas

DNV 90

©1990, Hendee Enterprises, Inc.

Enduro® Creates an Oasis of Shade!

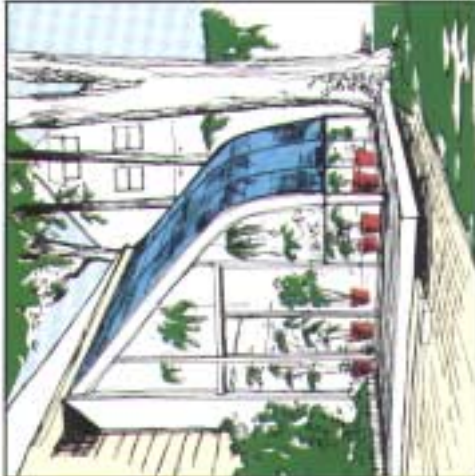
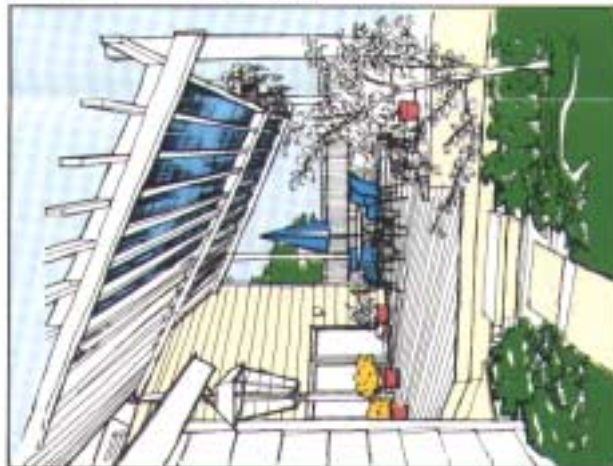
Hundreds of Applications Limited only by your imagination.

- Patios
- Skylights
- Tennis Courts
- Solariums
- Privacy Screening
- Garden Shade
- Spa Leaf Covers
- Awnings
- Windows
- Safety Screens
- Balcony Shade
- R.V. Awnings
- Motor Home Shade
- Auto Shadeport
- Beach Sun Shelter
- Cabana Covers
- Garden Wind Screen
- Trailer Tarpsulin
- Pet Sun Screen
- Snow & Wind Screen
- and

Many

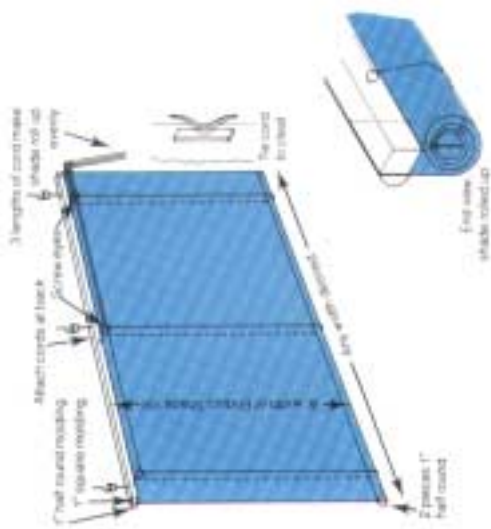
Many

More...



Do it Yourself

Roll-up Shade Details



Making a Roll-up Shade

The drawing shows an easy inexpensive way to make a roll-up shade 6' high (the width of Enduro Shade) and as wide as you want it.

Materials needed are A) Enduro Shade 6' wide and as long as you need, B) three lengths of 1" half-round molding, C) one length of 1" square molding, D) three lengths of cord, E) seven screw eyes, F) three screw hooks to support the shade, and G) one cleat to hold shade cords to keep the shade at the proper height.

Nail two half-round molding lengths together along bottom shade edge and the square molding and a half-round molding together along the top. Attach cords at back of upper molding and run them under the shade and back up through screw eyes at the top of the molding, then out an end.

Place three screw eyes at the top to permit hanging your roll-up shade on screw hooks. Place cleat at convenient position to hold cord ends.